

**Steam chamber CATHILD:**  
Sublime your wood with  
a clear and uniform  
signature shade.



Scan and discover

**Colors** with delicate  
tones

that accentuate the elegance and character of the wood

**100%** treated  
woods

Elimination of wood-boring insects

Steamed beech color palette



**100%** stained  
woods

uniform color

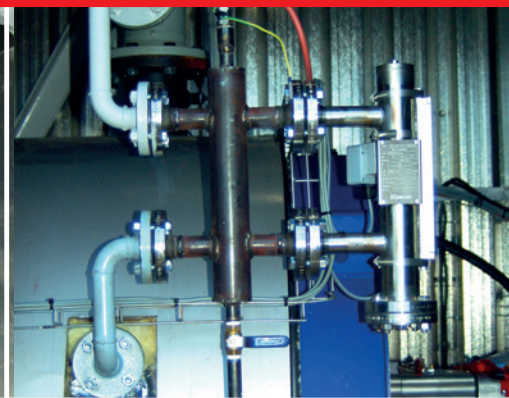
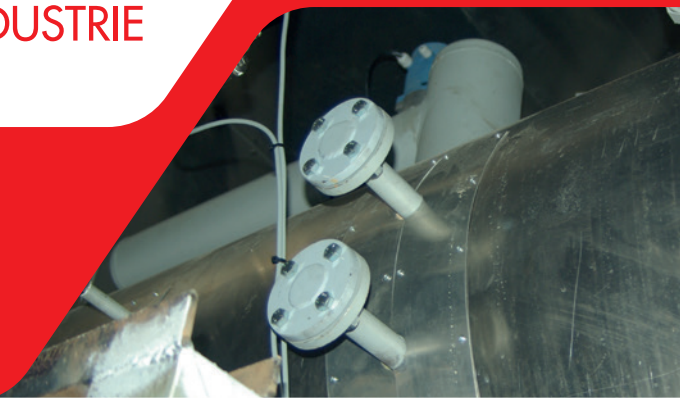
# STEAM CHAMBERS

ACC-GGS-Combined kiln  
and steaming chamber

 **CATHILD INDUSTRIE**



## STEAM CHAMBER



### DIRECT OR INDIRECT STEAM CHAMBER ACC

Steaming by direct injection of low-pressure steam, supplied by a boiler or a steam generator fueled by biomass or gas.

Indirect steaming is achieved through an above-ground or underground water tank.

An exchanger, supplied by a steam boiler or a superheated hot water boiler (biomass or gas-fired), heats the water in the tank to boiling point.

### STEAM CHAMBER GGS

Indirect steaming is performed through an above ground or underground water tank equipped with an immersed burner, which can operate on either biomass or gas.

### COMBINED KILN AND STEAMING CHAMBER

Combined solution in a single chamber: a short steaming cycle (a few hours) to ensure uniform wood color, immediately followed by a drying cycle.

Reduces investment costs by 30%. Cuts handling operations by 50%.

Lowers energy consumption, as 100% of the steaming energy is used for drying.

Reduces greenhouse gas (GHG) emissions by 30%.

Quality and uniformity of color after drying.

### Prefer Steam chambers CATHILD:

Uniform color throughout the wood

Uniform moisture content and quality of the woods

Elimination of harmful insects throughout the wood

Optimal timber bending